



# Architecture

Chicago

Illinois, USA





## Chicago

Known as the Windy City, Chicago rises up from the shores of Lake Michigan to present the perfect image of a modern American metropolis.

As the 'Gateway to the West' and the starting point of the famous Route 66, Chicago became America's fastest growing city as the country expanded westward. It is now the third largest city in the

USA, with 77 distinct districts and a population of nearly three million people.

History and architecture have always gone hand-in-hand in Chicago. The Great Fire of 1871 forced the city to completely reinvent itself and provided the foundation for the vibrant modern skyline we see today.

*[ "It is hopeless for the occasional visitor to try to keep up with Chicago. She outgrows his prophecies faster than he can make them." ]*

Mark Twain



## Willis Tower™

Located in the heart of the city, the 110-story Willis Tower was completed in 1974 at a cost of \$175 million. The tower was the first to use the “bundled-tubular” construction principle, where nine independent sections were joined together to provide extra stability against Chicago’s high winds. The Willis Tower has more than 16,000 bronze-tinted windows and 28 acres (11.3 ha) of black aluminum cladding or “skin”. The Ledge, the famous glass balcony that extends from the tower’s observation deck, leaves visitors standing 1,353 ft. (412 m) in the air.



## Cloud Gate

Designed by British artist Anish Kapoor, the 110 ton (99,790.3 kg) elliptical sculpture is forged from a seamless series of highly polished stainless steel plates, which reflect Chicago's famous skyline and the clouds above. Inspired by liquid mercury, the sculpture is among the largest of its kind in the world, measuring 66 ft. (20 m) long by 33 ft. (10 m) high.

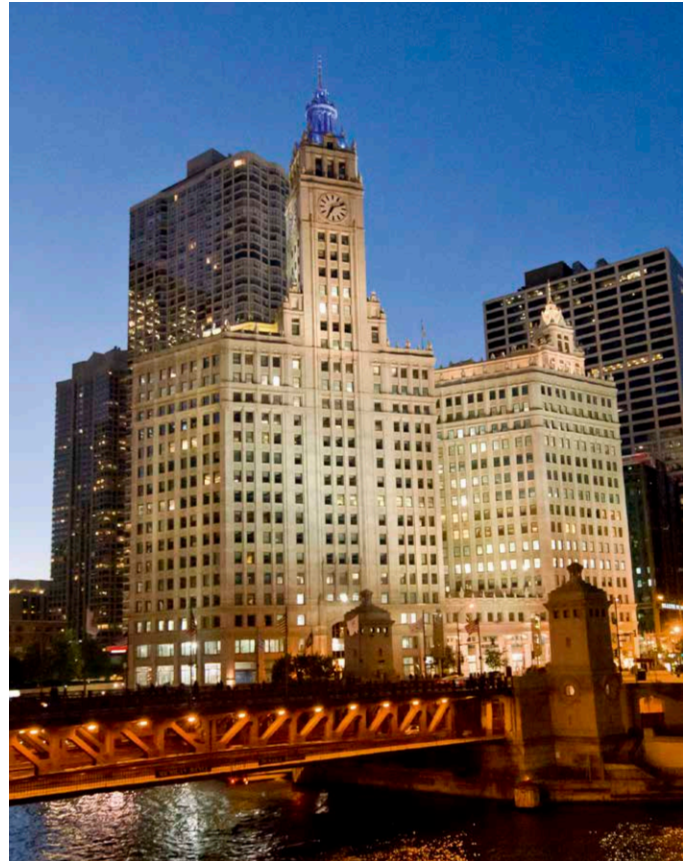


## The Wrigley Building



Standing on a triangular piece of land at the northwest corner of Michigan Avenue and the Chicago River, The Wrigley Building has been an iconic part of the city's skyline for over 95 years. The Wrigley Building consists of two towers, completed in 1921 and 1924, connected by walkways at the 3rd and 14th floors. The Wrigley Building's architecture combines French Renaissance and Spanish Revival styles, but adds a unique American twist.

The Wrigley Building is clad in more than 250,000 terra cotta tiles of more than 500 unique designs. The tiles are six different colors, ranging from blue-white at the bottom to creamy white at the top, to enhance a sunlit appearance.

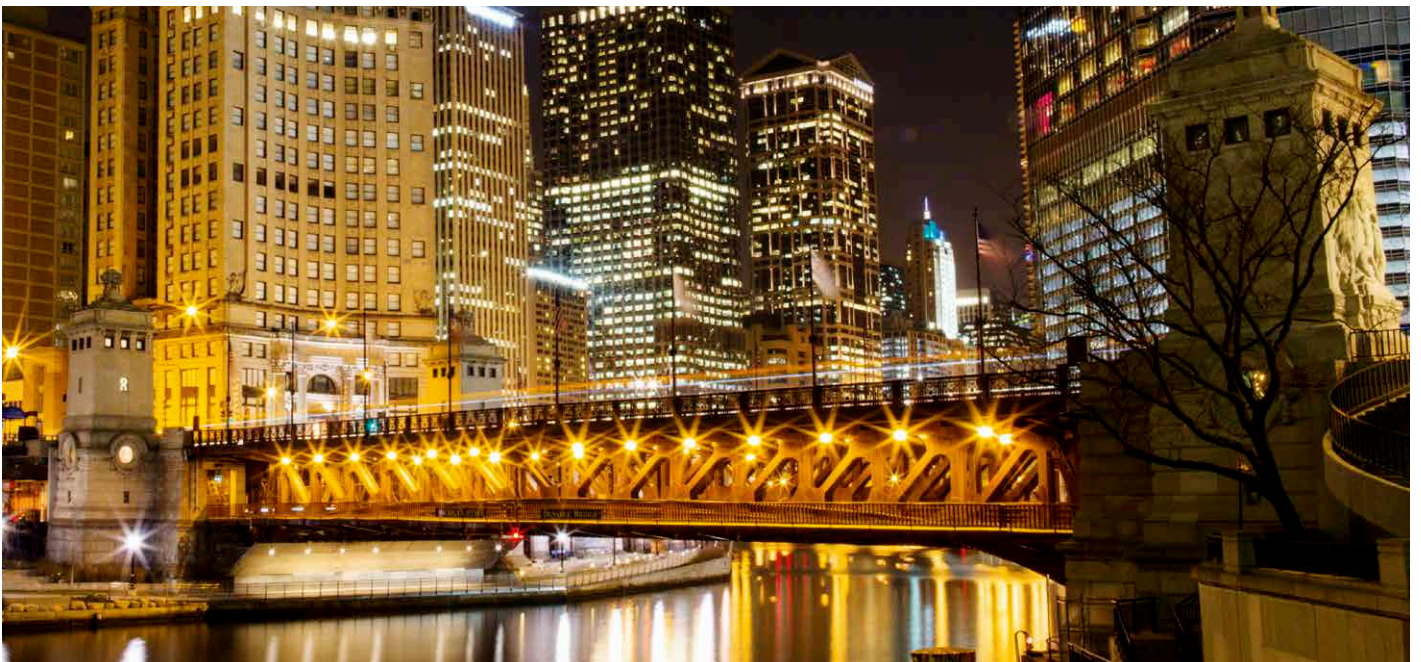


## DuSable Bridge



The DuSable Bridge is where the famous Michigan Avenue crosses the Chicago River and is both a beautiful work of art and a great civil engineering feat. Completed in 1920, the Beaux Arts

style bridge was designed to resemble the Alexander III Bridge over the Seine in Paris. The double-deck bridge with highways on both levels opens up to allow boats to pass underneath.





## Big Red



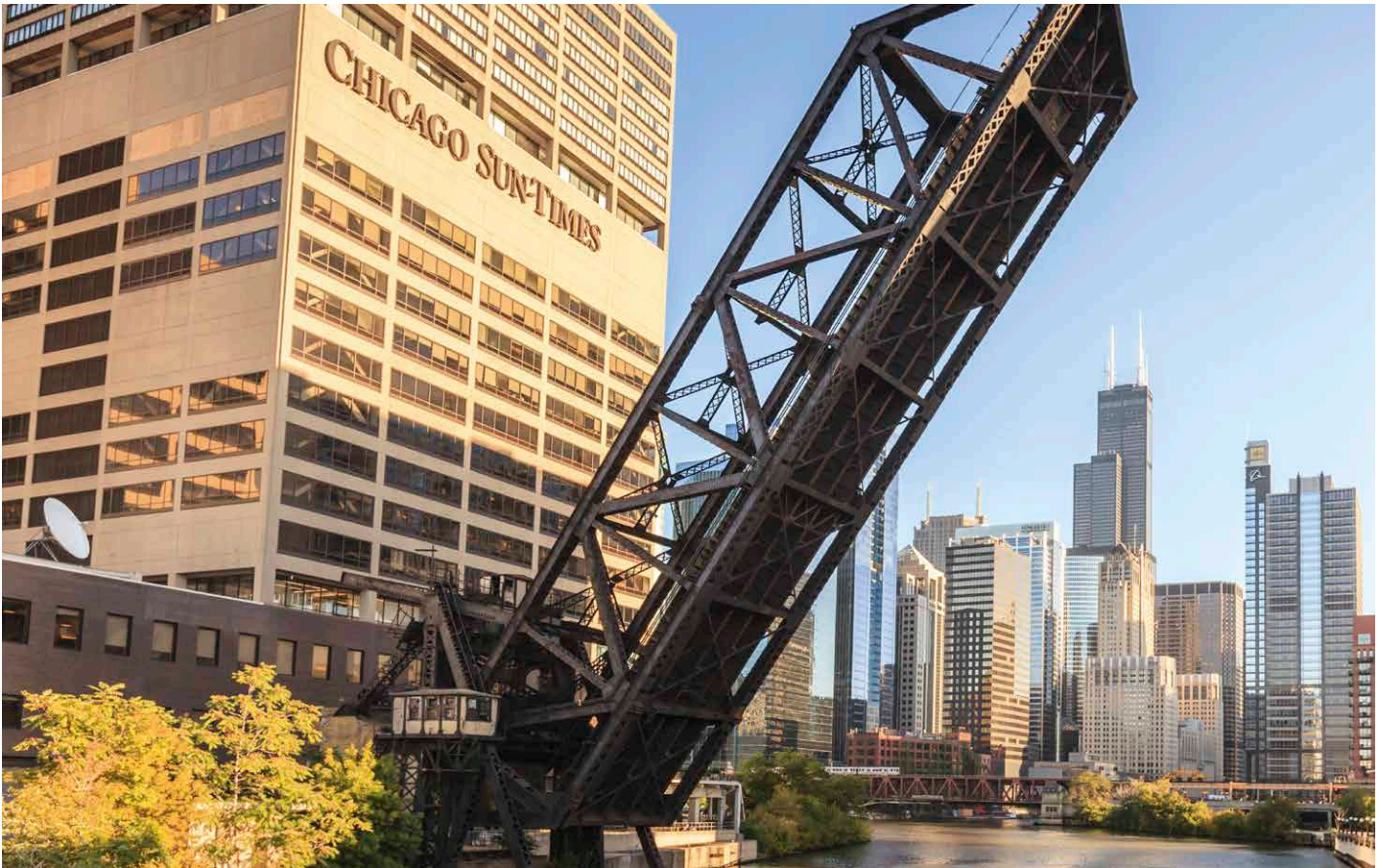
This simple, rectangular International Style structure was completed in 1973 and is famous for its eye-catching red color. The 600 ft. (183 m) tall building is also renowned for using its lights and windows to display messages during festive and sporting events. A computer program is used to calculate which windows need to be activated to create the proper message.



## John Hancock Center



Completed in 1970, the distinctive 100-story John Hancock Center reaches 1,127 ft. (343.5 m) into the city skyline. Named after an insurance company and original tenant, the tower is known locally in Chicago as “Big John”. A band of white lights adorn the top of the building and are visible throughout Chicago at night. The color of these lights changes to mark different holidays such as Christmas (red & green), Valentine’s Day (red & white) and St Patrick’s Day (green).



## Facts & Statements



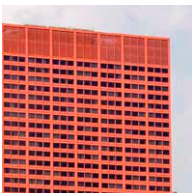
*With only 44 stories, Big Red is not a massive structure by Chicago standards.*



*Within the tower, there are 25 miles (40.2 km) of plumbing, 1,500 miles (2,414 km) of electric wiring, 80 miles (129 km) of elevator cable, and 145,000 light fixtures.*



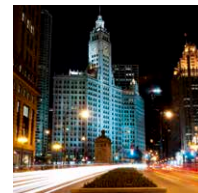
*When The Wrigley Building opened, there was an observatory above the 26th floor in the Clock Tower. Admission was 5 cents and included a piece of Wrigley gum. The Clock Tower was inspired by La Giralda, which is now part of Spain's Seville Cathedral.*



*The total floor area of the building is 1,299,990 sq. ft. (120,773 m<sup>2</sup>)*



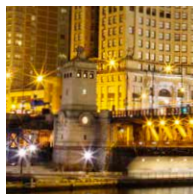
*The tower weighs more than 222,500 tons (201,848,605 kg), took three years to complete and used enough concrete to make an eight-lane, five mile long (8 km) highway.*



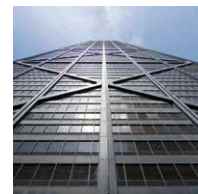
*The Wrigley Building was the first to be air-conditioned in Chicago and the tallest at the time of its construction.*



*The sculpture was assembled in California and sailed through the Panama Canal and St Lawrence Seaway to Chicago.*



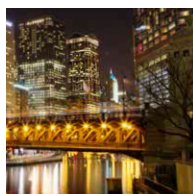
*The four bridge houses provide a canvas for bas-relief sculptures depicting pivotal moments in the city's history.*



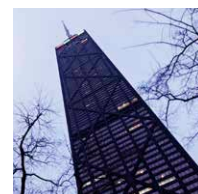
*There are 1,632 steps from the main lobby to the observatory on level 94 of the tower.*



*The entire sculpture is cleaned and washed twice a year with 40 US gallons (150 liters) of liquid detergent.*



*Each leaf weighs 3,400 tons (3,084,428 kg), but due to the fine balance of the counterweights, two 108-horsepower motors are able to open and close the bridge.*



*The tower's design was tested to withstand winds of 132 miles per hour (212.4 km per hour).*

# LEGO® Architecture—then and now

There has always been a natural connection between the LEGO® brick and the world of architecture. Fans who build with LEGO elements instinctively develop an interest in the form and function of the structures they create. At the same time, many architects have discovered that LEGO bricks are the perfect way of physically expressing their creative ideas.

This connection was confirmed in the early 1960s with the launch of the LEGO 'Scale Model' line. It matched the spirit of the age where modern architects were redefining how houses look and people were taking an active interest in the design of their new homes. These sets were designed to be different from the normal, brightly colored LEGO boxes; they also included a book on architecture as a source of inspiration.

Decades later, architect and LEGO fan Adam Reed Tucker, revived the idea of expressing architecture using LEGO bricks and in partnership with the LEGO Group, launched the LEGO Architecture line that we know today.

His first models, and the original sets in the current LEGO Architecture series, were interpretations of famous skyscrapers from his hometown of Chicago. Since then LEGO Architecture has developed and evolved, first with well-known buildings from other cities in the United States, and now with iconic structures from Europe, the Middle East and Asia.

The introduction of our LEGO Architecture Studio set echoes the ambitions of the earlier LEGO 'Scale Model' line and widens the potential of the LEGO Architecture series. Now you can enjoy building and learning about specific landmark buildings, or create exciting architectural models from your own fantasy. An inspiring 270-page book, featuring a number of renowned architects from around the world, guides you through the principles of architecture and encourages you in your own creative building.



21050  
LEGO Architecture Studio

## References

Pictures -  
© Shutterstock  
© Offset

Text -  
[www.johnhancockcenterchicago.com](http://www.johnhancockcenterchicago.com)  
[www.willistower.com](http://www.willistower.com)  
[www.thewrigleybuilding.com](http://www.thewrigleybuilding.com)  
[www.cityofchicago.org](http://www.cityofchicago.org)  
[www.architecture.org](http://www.architecture.org)

Customer Service  
Kundenservice  
Service Consommateurs  
Servicio Al Consumidor  
[www.lego.com/service](http://www.lego.com/service) or dial

00800 5346 5555 :   
1-800-422-5346 : 

LEGO and the LEGO logo are trademarks of the LEGO Group.  
©2017 The LEGO Group.