



Letter to Santa

GLUE HERE

GLUE HERE

LEGO and LEGO logo are trademarks of the LEGO Group. ©2024 The LEGO Group. The letter template is protected by intellectual property rights and is not intended for sale - sale is prohibited.

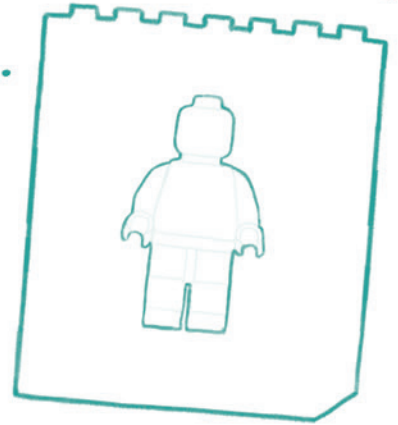


Dear Santa

My name is:

.....
and I am years old.

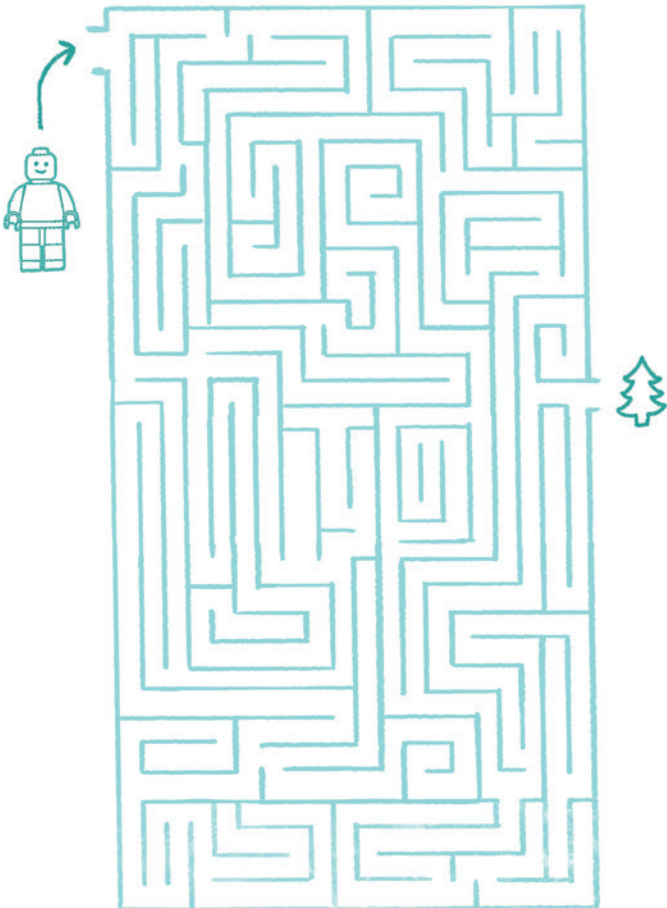
Here I'll draw myself ;)



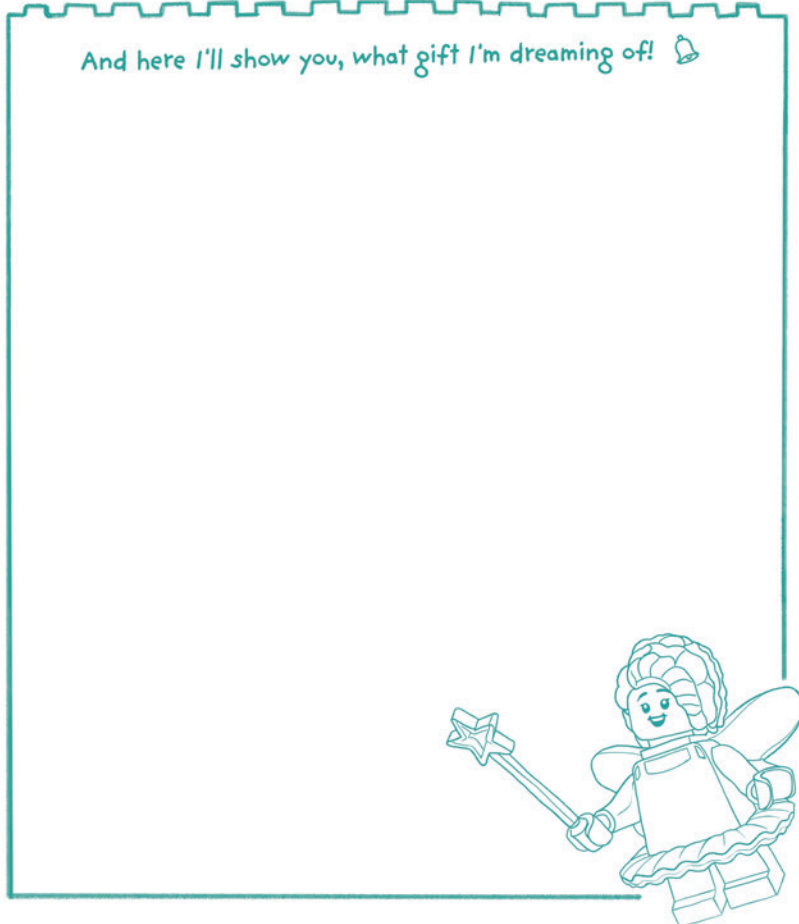
I'll fill this picture with colors for you!



Let me draw you how to find my Christmas Tree ;)



And here I'll show you, what gift I'm dreaming of! 🛎



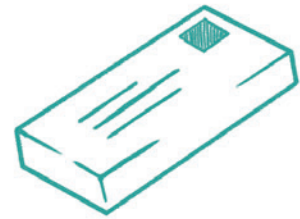
Stay warm and give hugs to everyone at the North Pole!

How to assemble the Letter to Santa?



Before you start, prepare:

1. paper glue or adhesive tape,
2. scissors for cutting,
3. crayons, markers and everything you want to decorate your letter :)



Ready? Let's print!

Before clicking "Print", make sure you have these settings:

- print format A4,
- single-sided printing,
- color will also come in handy ;)

3 pages will be printed - envelope, letter to fill in and instructions.



How to prepare the envelope?

1. Invite an adult to help you and together cut out the envelope, walking with scissors along the dotted line.
2. Fold the envelope, so that the large walls fit together evenly.
3. Bend the two side flaps slightly and cover them with glue.
4. Glue the walls of the envelope together (or connect them with adhesive tape) and it's done!



Now fill your Letter to Santa – and have a great fun doing it! :)

When you're done, fold the paper in half... and then in half again.
Put it inside an envelope and seal it.



Give your letter to an adult.
He'll know how to hand a letter to Santa!



Have fun!

